

APLP2 Antibody (C-term)
Affinity Purified Rabbit Polyclonal Antibody (Pab)
Catalog # AP14673b

Specification

APLP2 Antibody (C-term) - Product Information

Application	WB, IHC-P,E
Primary Accession	Q06481
Other Accession	NP_001135748.1 , NP_001633.1
Reactivity	Human, Mouse
Host	Rabbit
Clonality	Polyclonal
Isotype	Rabbit IgG
Antigen Region	593-621

APLP2 Antibody (C-term) - Additional Information

Gene ID 334

Other Names

Amyloid-like protein 2, APLP-2, APPH, Amyloid protein homolog, CDEI box-binding protein, CDEBP, APLP2, APPL2

Target/Specificity

This APLP2 antibody is generated from rabbits immunized with a KLH conjugated synthetic peptide between 593-621 amino acids from the C-terminal region of human APLP2.

Dilution

WB~~1:1000

IHC-P~~1:10~50

E~~Use at an assay dependent concentration.

Format

Purified polyclonal antibody supplied in PBS with 0.09% (W/V) sodium azide. This antibody is purified through a protein A column, followed by peptide affinity purification.

Storage

Maintain refrigerated at 2-8°C for up to 2 weeks. For long term storage store at -20°C in small aliquots to prevent freeze-thaw cycles.

Precautions

APLP2 Antibody (C-term) is for research use only and not for use in diagnostic or therapeutic procedures.

APLP2 Antibody (C-term) - Protein Information

Name APLP2 ([HGNC:598](#))

Function May play a role in the regulation of hemostasis. The soluble form may have inhibitory properties towards coagulation factors. May interact with cellular G-protein signaling pathways. May bind to the DNA 5'-GTCACATG-3'(CDEI box). Inhibits trypsin, chymotrypsin, plasmin, factor XIA and plasma and glandular kallikrein. Modulates the Cu/Zn nitric oxide-catalyzed autodegradation of GPC1 heparan sulfate side chains in fibroblasts (By similarity).

Cellular Location

Cell membrane; Single-pass type I membrane protein. Nucleus

Tissue Location

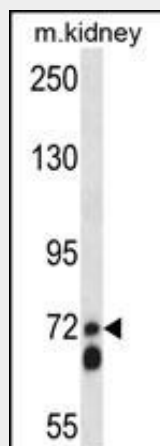
Expressed in placenta, brain, heart, lung, liver, kidney and endothelial tissues

APLP2 Antibody (C-term) - Protocols

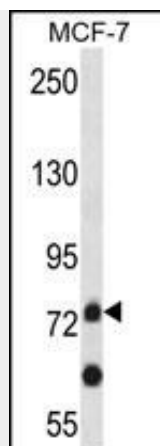
Provided below are standard protocols that you may find useful for product applications.

- [Western Blot](#)
- [Blocking Peptides](#)
- [Dot Blot](#)
- [Immunohistochemistry](#)
- [Immunofluorescence](#)
- [Immunoprecipitation](#)
- [Flow Cytometry](#)
- [Cell Culture](#)

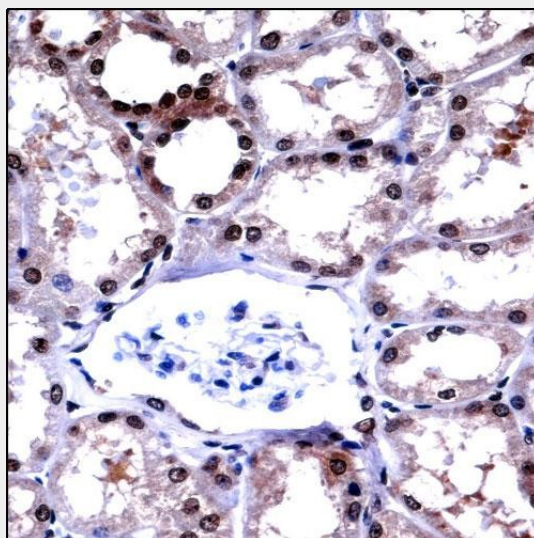
APLP2 Antibody (C-term) - Images



APLP2 Antibody (C-term) (Cat. #AP14673b) western blot analysis in mouse kidney tissue lysates (35ug/lane). This demonstrates the APLP2 antibody detected the APLP2 protein (arrow).



APLP2 Antibody (C-term) (Cat. #AP14673b) western blot analysis in MCF-7 cell line lysates (35ug/lane). This demonstrates the APLP2 antibody detected the APLP2 protein (arrow).



APLP2 Antibody (C-term) (AP14673b) immunohistochemistry analysis in formalin fixed and paraffin embedded human kidney tissue followed by peroxidase conjugation of the secondary antibody and DAB staining. This data demonstrates the use of APLP2 Antibody (C-term) for immunohistochemistry. Clinical relevance has not been evaluated.

APLP2 Antibody (C-term) - Background

APLP2 may play a role in the regulation of hemostasis. The soluble form may have inhibitory properties towards coagulation factors. May interact with cellular G-protein signaling pathways. May bind to the DNA 5'-GTCACATG-3' (CDEI box). Inhibits trypsin, chymotrypsin, plasmin, factor XIA and plasma and glandular kallikrein.

APLP2 Antibody (C-term) - References

- Rose, J.E., et al. Mol. Med. 16 (7-8), 247-253 (2010) :
- Tuli, A., et al. J. Biol. Chem. 284(49):34296-34307(2009)
- Kaden, D., et al. J. Cell. Sci. 122 (PT 3), 368-377 (2009) :
- Tuli, A., et al. J. Immunol. 181(3):1978-1987(2008)
- Tuli, A., et al. Immunogenetics 60(6):303-313(2008)